



AGENDA ITEM NO. 15

**STOCKWOOD, HENGROVE & WHITCHURCH  
NEIGHBOURHOOD PARTNERSHIP  
17th SEPTEMBER 2014**

**Report of:** Ariaaf Hussain, Neighbourhood Partnership Coordinator

**Title:** Neighbourhood Partnership Coordinators' Update Report

**Contact:** 0117 922 3218 / [ariaf.hussain@bristol.gov.uk](mailto:ariaf.hussain@bristol.gov.uk)

**RECOMMENDATIONS**

- a) To note the progress of the unringfencing of devolved budgets**
- b) To note the changes to the Well Being Process**
- c) To decide how to allocate Green Capital Funding**
- d) To nominate one or two reps to be part of the Citywide Event Planning Group, and feed the NPs ideas for the day**
- e) To note the NP toolkit**
- f) To note the Electoral Review of Bristol**
- g) To note the update on Extra Care Housing / Bristol Retirement Living**
- h) To note the update on Bristol Youth Links**
- i) To note the update on the s106 Bus Stops Improvements - Hengrove**

**1. Devolved budgets**

- 1.1 The recommendation to create a single, consolidated neighbourhood budget from the local traffic scheme, wellbeing and clean and green budgets is being presented at Cabinet on 2<sup>nd</sup> September 2014.
- 1.2 If this is agreed, it means that NPs will be able to allocate this neighbourhood budget to any local priority. This will also make it easier for the neighbourhood budget to be spent alongside CIL.
- 1.3 S106 funding will still need to be spent as in the original agreements with the planners.

## **2. Well Being Fund**

- 2.1 The Neighbourhood Management Service has recently undergone a restructure, as part of the £90million cuts required by the Council. This has resulted in fewer people and resources being available to service the Neighbourhood Partnerships. To ensure that an effective service is still available to all Neighbourhood Partnerships several administrative processes are being put in place at a City Wide level. The first of which is the way that we administrate the Well Being Fund.
- 2.2 To ensure that all NPs get the same level of support the following changes have been made.
  - All completed applications will be sent to a central address [neighbourhood.partnerships@bristol.gov.uk](mailto:neighbourhood.partnerships@bristol.gov.uk)
  - All application forms now contain the same questions, as do all monitoring and other Well Being paperwork. NPs will still decide on their priorities and maximum grant levels.
  - Applications will be sent out via email to the appraisal panels/Wellbeing Subgroups at an agreed time before the group convenes. If appraisal panel members do not have access to a computer then hard copies will be sent, however this will be the exception and not the rule.
  - Panel members are requested to read the applications before the panel meeting and make notes of any comments and/or issues they have with the project and bring them to the meeting.
  - The Neighbourhood Partnership Coordinator will supply no more than 2 copies of each application at the appraisal panel meeting;
  - The discussion and assessment process will take place in the same way that each NP usually does this, the two paper copies will be used to clarify any details.

- Following decisions made at the NP meeting by the Neighbourhood Committee, all Offers of Grant funding will be sent out by the admin team, who will be the link for ongoing communication.
- Monitoring forms will be sent to projects every 6 months for projects to complete.

### **3. Green Capital Fund**

3.1 As discussed at the June NP meeting, each Neighbourhood Partnership has been allocated £10,000 of Green Capital Funding. This is to fund projects from January to December 2015.

3.2 Projects will contribute to the following priorities.

- Increasing people's access to affordable, healthy, sustainable food
- Enabling more people to access affordable energy
- Inspiring and educating people about nature and how to care for it
- Providing activities and initiatives that help people re-use, repair, and share materials
- Helping people discover more sustainable transport (eg walking, cycling or public transport)

**3.3 The NP is requested to consider how to allocate this funding from the following options (if you have not already done so):**

a) To allocate funding through a process that mirrors the Well Being Fund. This process would take place alongside and at the same time as the Well Being Process. If this option is your preferred option then you will need to agree a maximum amount of grant. (NB, the NP makes the final decision on Green Capital Funding)

b) To allocate a proportion of the funding to projects that your NP or Environment Group has already worked up. If you choose this option an application form will still need to be submitted to the NP to form part of the paper trail. Monitoring information would also still be required after the project has been delivered. The rest would then be used as per the grant process above

### **4. City Wide Event**

4.1 The fifty Resident NP members and Councillors who attended the two Review meetings in August agreed that they would like one big City Wide NP Conference per year. The request was that resident reps and

Councillors lead the planning of the event, which should include opportunities for networking, showcasing good practice as well as key training activities, and that the Neighbourhood Management service supports the organisation and development of the event.

- 4.2 To get things moving the first NP citywide event planning group meeting will take place at City Hall 15<sup>th</sup> October (NPs that are planned after this date will be notified via email before their meetings).
- 4.3 **The NP is requested to nominate one or two reps to be part of the Citywide Event Planning Group, and feed in your NP's ideas for the day.**

## **5. Neighbourhood Partnerships Toolkit**

- 5.1 Each NP is different, and it is not within the remit of the NP Review to change how NPs are managed locally. If your NP would like to look at local governance arrangements such as NP membership, size, number of subgroups etc., we will be putting together a tool kit which you could work through with your NP Coordinator to explore different models.

## **6. Electoral Review of Bristol**

- 6.1 The Local Government Boundary Commission for England has formally commenced an electoral review of Bristol City Council. The purpose of this letter is to inform you of the review and seek your views on future electoral ward boundaries for the council.
- 6.2 The Commission is carrying out a review to deliver electoral equality for voters across the city. At present, some city councillors represent many more or many fewer, electors than their colleagues elsewhere in the city. The review aims to correct those imbalances.

### **What is an electoral review?**

- 6.3 The electoral review will recommend new electoral arrangements for Bristol City Council. In particular, it will propose:
  - 1. The total number of councillors elected to the council in the future.
  - 2. The number of wards.
  - 3. The number of councillors representing each ward.
  - 4. Ward boundaries.
  - 5. Names of wards.

## **When?**

6.4 The 22<sup>nd</sup> July 2014 is the start of a ten week public consultation during which the Commission is inviting proposals for new warding arrangements. The consultation will close on 29 September 2014. After considering all representations made during this consultation, the Commission intends to publish draft recommendations in December 2014. There will then be a further period of consultation on the draft recommendations. Final recommendations are expected to be published in May 2015. The new electoral arrangements will come into effect at the local elections in 2016.

## **How to get involved?**

6.5 This is a public consultation and we welcome views from individuals and organisations across the city on where they think new warding patterns should be drawn.

6.6 The Commission is minded to recommend that 70 councillors should be elected to Bristol City Council in the future. It is now inviting proposals to help it draw up a pattern of wards to accommodate 70 city councillors.

6.7 In drawing up a pattern of wards, the Commission must balance three criteria, which are set out in law, namely:

- To deliver electoral equality where each city councillor represents roughly the same number of electors as others across the city.
- That the pattern of wards should, as far as possible, reflect the interests and identities of local communities.
- That the electoral arrangements should provide for effective and convenient local government.

6.8 We are asking local people and organisations for their views as to the best pattern of wards for the city which meet the requirements set out above.

6.9 The Commission will treat all submissions equally and will judge each case on its merits and against the statutory criteria. If you wish to put

forward a view, we would also urge you to ensure that your submission is supported by evidence. For example, if you wish to argue that two communities should be included in the same ward, make sure you tell the Commission why they should be together, providing evidence about community facilities, ties, organisations and amenities, rather than simply asserting that they belong together.

- 6.10 There is plenty more advice on our website about how you can get involved in the consultation and put your views forward. Log on to [www.lgbce.org.uk](http://www.lgbce.org.uk) to find out more. The website includes the technical guidance that explains the process and our policies as well as guidance on how to take part in each part of the process. We have set up a page on our site which is dedicated to the review of Bristol where you can find all the relevant information.
- 6.11 You can also access interactive maps of the current ward boundaries across the city on our specialist consultation portal. The portal also allows you to draw your own boundaries, mark areas of interest on the map and upload documents directly to the site. Log on to [www.consultation.lgbce.org.uk](http://www.consultation.lgbce.org.uk) to access the portal or find it via our main website.

### **Get in touch**

- 6.12 We encourage as many people and organisations as possible to get involved with the consultation and we encourage local organisations and parish councils to engage their local networks and communities in the review.
- 6.13 View interactive maps of the city, draw your own boundaries and have your say at our specialist consultation portal at:  
[www.consultation.lgbce.org.uk](http://www.consultation.lgbce.org.uk).

Find out more about the review at: [www.lgbce.org.uk](http://www.lgbce.org.uk).

Email your views to: [reviews@lgbce.org.uk](mailto:reviews@lgbce.org.uk).

Follow us on Twitter at: [@lgbce](https://twitter.com/lgbce).

### **Write to:**

Review Officer (Bristol), Local Government Boundary Commission for England, Layden House, 76-86 Turnmill Street, London, EC1M 5LG

## **7. Extra Care Housing / Bristol Retirement Living**

7.1 Bristol Retirement Living at New Fosseway, is comprised of the following elements:

- 60 bed care home with an emphasis on people with dementia 40 units of affordable rented Extra Care Housing (ECH)
- 20 units of shared ownership ECH
- 140 units of build-to-sell ECH

7.2 The concept of ECH is about providing a bespoke living environment which can cater for the changing needs of its residents. Flats are 'disability-friendly' and the complex includes communal areas such as a restaurant and spaces for activities which can support older people's practical needs and ameliorate the risks of social isolation. There is a 24-hour care presence (with alarm response system) and care that can be increased according to need within their own homes. The evidence base for ECH is growing and shows significant benefits to the individual and, crucially, a real alternative to residential care.

7.3 The dementia care home being located on site adds an additional dimension to the care offer. It means people do not have to leave their communities when their needs increase and it can also provide security and even short-term convalescence (e.g. after a hospital stay) allowing people to return to their own homes

7.4 The above was agreed at the October 2013 Cabinet. The Cabinet report obtained approval to dispose of the former school site at New Fosseway Road, Hengrove for redevelopment to provide an ECH scheme and Dementia Care Home provided by an independent provider partner (either from a charity or private organisation. Included in that cabinet report was a design brief which sets out what the buildings should look like and reflects the work on design parameters for the site that had lots of involvement with local people and the Neighbourhood Partnership previously.

7.5 Finding a partner to work with is being managed by a competitive dialogue process. This is a procurement process that rather than just stipulates in detail what the Council wants to buy, we enter discussions

with shortlisted bidders about how best they can deliver what we want. This gives a chance to get the most effective solution and works well where there might be several different solutions as the case is here. The downside is it takes a lot longer to appoint a contractor

7.6 The project is currently at Pre Qualification Stage (basically checking to see if bidders meet some basic criteria) with the successful bidders due to be notified and invited to progress to the dialogue stage on 19<sup>th</sup> September.

7.7 The key dates going forward are:

- Publish invitation to submit Outline Solutions (ISOS) – 19<sup>th</sup> September 2014
- Deadline for bidders to submit ISOS solutions – 14<sup>th</sup> November 2014
- ISOS Evaluation complete – 2<sup>nd</sup> January 2015
- Invitation to dialogue Detailed Solutions (IDDS) – 26<sup>th</sup> January 2015
- Invitation to submit Final Tenders (ISFT) – 13<sup>th</sup> March 2015
- Deadline for bidders to submit Final Tenders – 27<sup>th</sup> March 2015
- Evaluation of Final Tenders complete – 8<sup>th</sup> May 2015
- Contract Award Report/Recommended bidder to DLT/Exec Member – 11<sup>th</sup> May 2015
- Award Contract – 23<sup>rd</sup> June 2015
- All planning processes complete Nov 2015
- Final opening (with 2 year build) March 2018

## **8. Bristol Youth Links**

8.1 A wide range of changes to staffing are taking place at the council.

### **New Bristol Youth Links Commissioning Post**

8.2 Les Compton has left his post of Team Manager for Quality Management and Service Development of Bristol Youth Links as of 22nd August. Interviews for a new post of Commissioner – Children's



have taken place and we will be sharing news of the appointment shortly. We expect the post-holder to start work this autumn.

### **Changes to the Bristol Youth Links 'in-house' team**

8.3 The Bristol Youth Links team of three Senior Practitioners, previously managed by Sophia Jamal, will, from the 1 October, each be managed by one of the three area Early Help Manager posts. Sophia's post as manager of the in-house team will no longer exist and Sophia will move into the vacant East Central Early Help Manager post.

8.4 As well as providing youth and play voluntary sector development in their areas, Senior Practitioners also manage staff responsible for specialist areas of work including youth participation (the youth forums and Youth council), anti-social behaviour and BME. For an updated list of specialisms, please see this page on our web site:  
<http://www.bristol.gov.uk/page/children-and-young-people/bristol-youth-links-contacts>

Your local Senior Practitioner contacts continue to be:

#### **South East (Lot 6) and South West (Lot 7)**

Peter de Boer

07795 445612

[peter.deboer@bristol.gov.uk](mailto:peter.deboer@bristol.gov.uk)

### **9. s106 Bus Stop Improvements – Hengrove**

9.1 Following the allocation by the Neighbourhood Committee of s106 funds toward Bus Stop improvement in April 2012. A meeting was held with the Public Transport Officer in early 2013 for the NP to influence design. Further consultations were held in May/June 2014 with passengers and local residents. Nearly one hundred comments and suggestions were made.

9.2 Further consultation was also undertaken with BPAC (Bristol Physical Access Chain) who are a group that advises BCC on ensuing accessibility for disable people

9.3 Following analysis of the comments from the consultations the improvements that will be made to the bus stops are as follows:

- Bus Stop at Chard Court (Fortfield Road)

- Bus Stop at Parbrook Court (Wharnccliffe Gardens)

9.4 The improvements will consist of raised kerbs, shelter and Real Time Information. All works will be done to the councils adopted standards which meet the requirements of the Disability Discrimination Act.

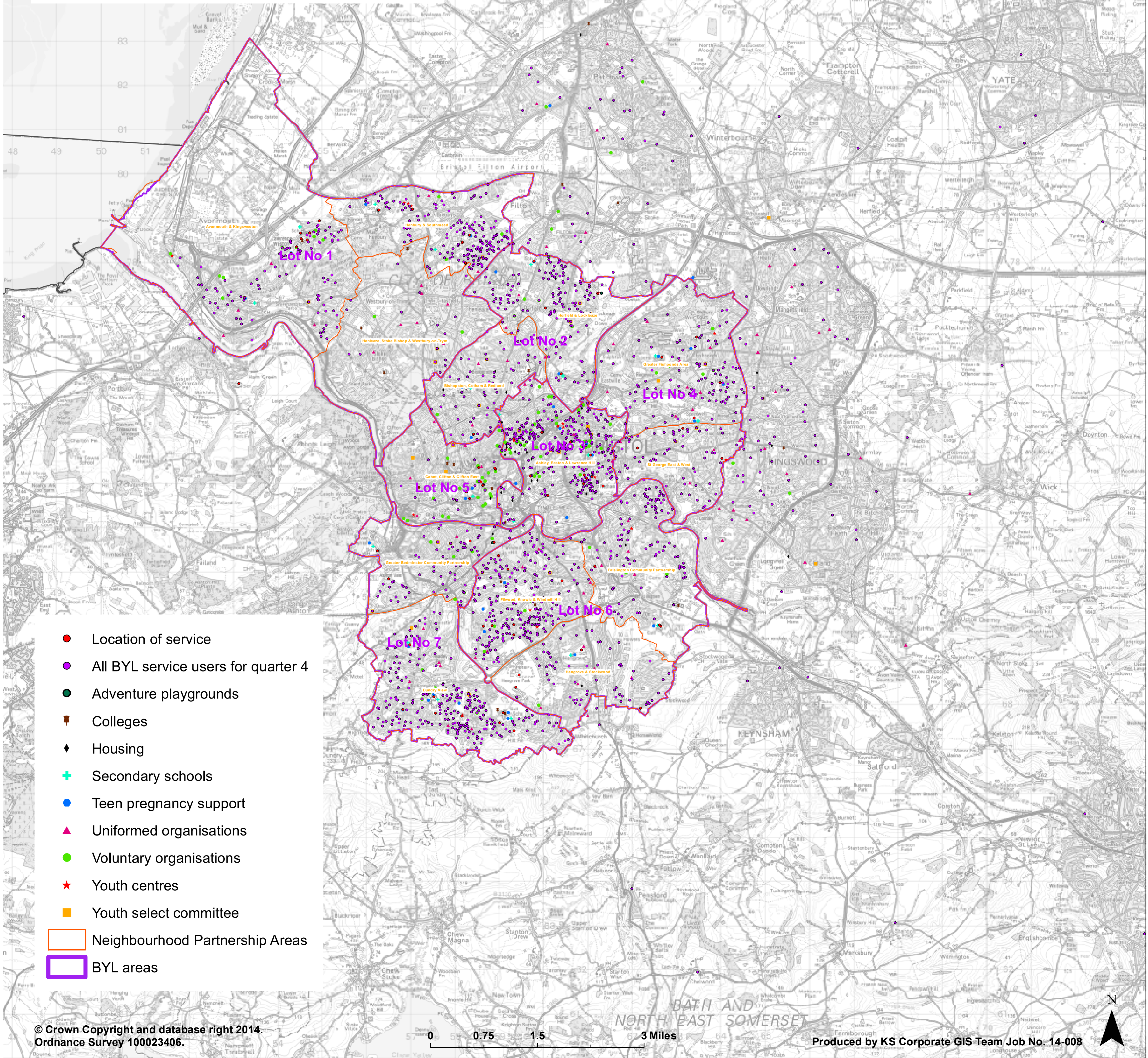


# Neighbourhood Partnership Areas with BYL lots

## Providers

1. Bristol Drugs Project
2. 1625 Independent People
3. Off the Record
4. The Prince's Trust
5. The Family Centre for Deaf Children
6. Learning Partnership West
7. Barnardo's
8. Creative Youth Network
9. Bristol Playbus
10. WECIL
11. Kids Company
12. Basement Studio
13. Bristol City Council

3506 BYL service users recorded for all lots during quarter 4  
Please note multiple users from individual postcodes



- Location of service
- All BYL service users for quarter 4
- Adventure playgrounds
- Colleges
- ◆ Housing
- ⊕ Secondary schools
- Teen pregnancy support
- ▲ Uniformed organisations
- Voluntary organisations
- ★ Youth centres
- Youth select committee
- ▭ Neighbourhood Partnership Areas
- ▭ BYL areas



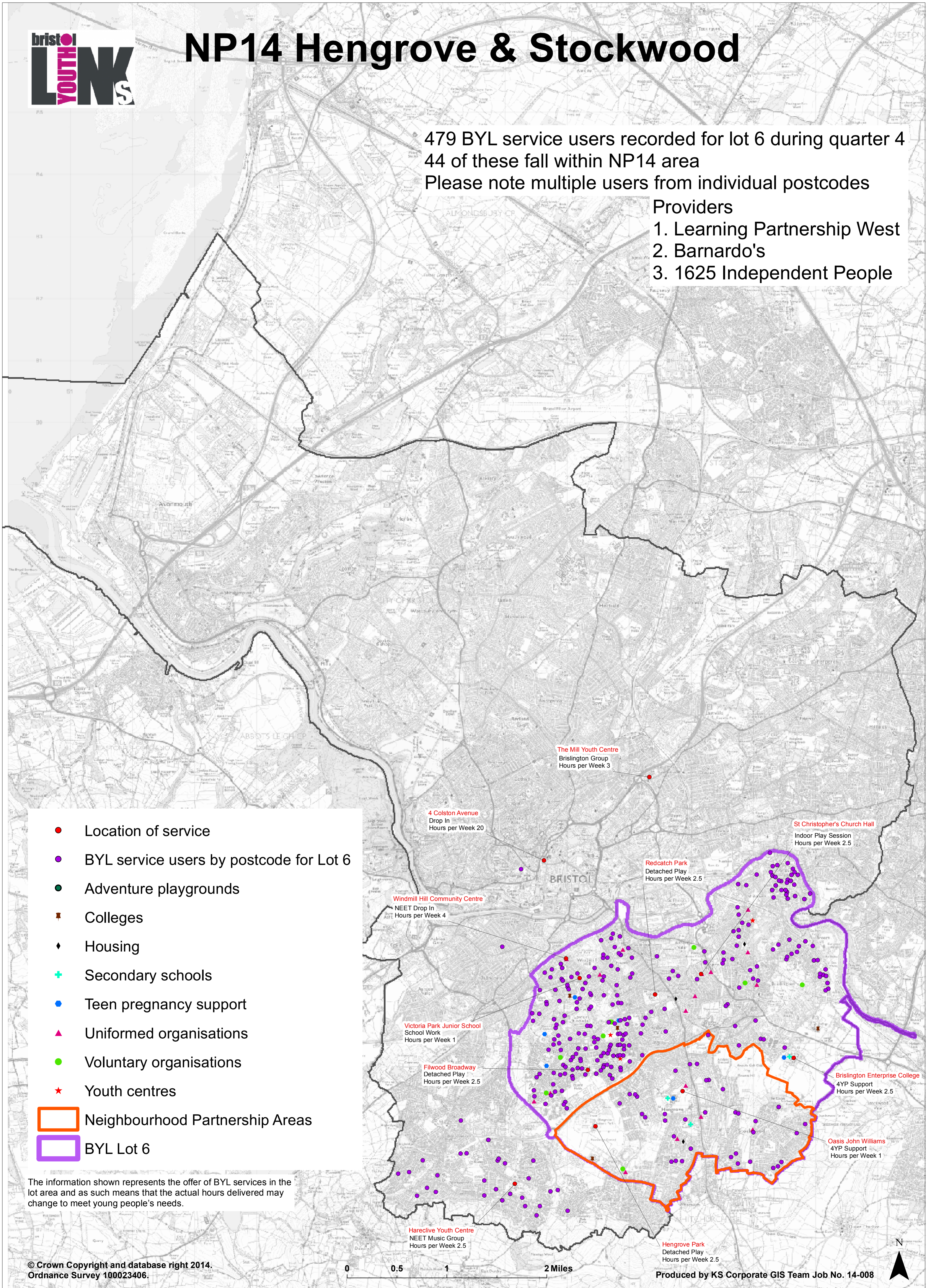


# NP14 Hengrove & Stockwood

479 BYL service users recorded for lot 6 during quarter 4  
 44 of these fall within NP14 area  
 Please note multiple users from individual postcodes

## Providers

1. Learning Partnership West
2. Barnardo's
3. 1625 Independent People



- Location of service
- BYL service users by postcode for Lot 6
- Adventure playgrounds
- Colleges
- ◆ Housing
- ✚ Secondary schools
- Teen pregnancy support
- ▲ Uniformed organisations
- Voluntary organisations
- ★ Youth centres
- ▭ Neighbourhood Partnership Areas
- ▭ BYL Lot 6

The information shown represents the offer of BYL services in the lot area and as such means that the actual hours delivered may change to meet young people's needs.



**Stockwood, Hengrove & Whitchurch Neighbourhood Partnership  
Meeting Dates 2014 – 2015:**

<b>Month</b>	<b>Meeting</b>	<b>Date</b>	<b>Time</b>	<b>Location</b>
September 2014	<b>NP</b>	<b>Wednesday 17/09/14</b>	<b>7.00pm</b>	Counterslip Baptist Church, Wells Road
Oct 2014	Environment Group	Tuesday 07/10/14	3.30 to 5.00pm	Hengrove Sports Centre(Parkwood Health Centre)
November 2014	Forum (H)	Tuesday 04/11/14	7.00pm	<b>TBC</b>
	Forum (S)	Thursday 06/11/14	7.00pm	Christ the Servant, Stockwood Road
	Well Being Deadline	Friday 14/11/14	12.00pm	n/a
	Well Being Panel & NC/NP Briefing	Tuesday 25/11/14	10.00am	Brunel House
December 2014	<b>NP</b>	<b>Wednesday 10/12/2014</b>	<b>7.00pm</b>	<b>TBC - Hengrove</b>
Jan 2015	Environment Group	Tuesday 13/01/15	3.30 to 5.00pm	Hengrove Sports Centre(Parkwood Health Centre)
February 2015	Forum (H)	Tuesday 03/02/15	7.00pm	Christ Church, Petherton Road
	Forum (S)	Thursday 05/02/15	7.00pm	<b>TBC</b>
	Well Being Deadline	Friday 20/02/15	12.00pm	n/a
March 2015	Well Being Panel & NC/NP Briefing	Tuesday 03/03/15	10.00am	Brunel House
	<b>NP</b>	<b>Wednesday 18/03/15</b>	<b>7.00pm</b>	South Bristol Sports Centre, West Town Lane